

EVAPCO, INC.

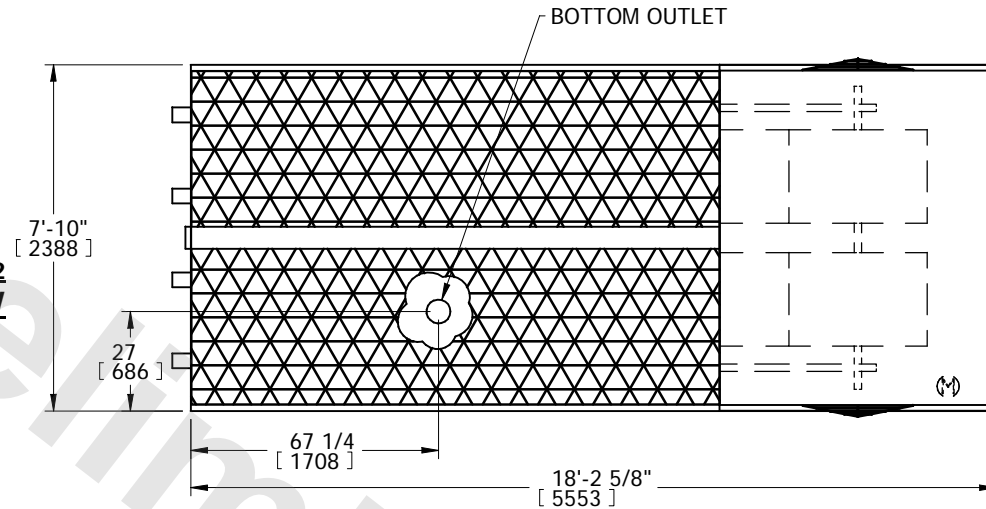


UNIT	MODEL #	SCALE	DWG. #	REV.	DATE	SERIAL #
EVAPORATIVE CONDENSER		NTS	CV081208-DRA-HR	-		

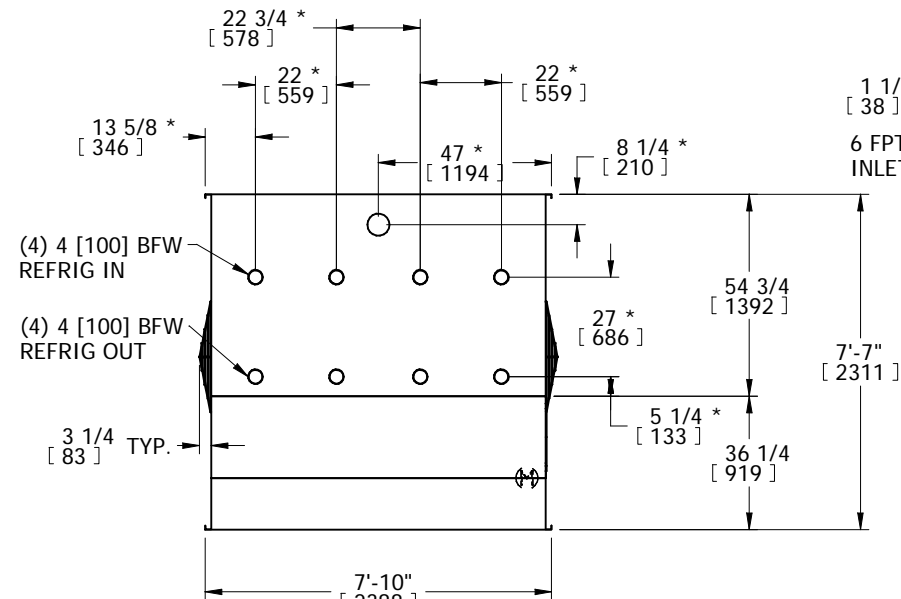
NOTES:

1. (M)- FAN MOTOR LOCATION
2. * -APPROXIMATE DIMENSIONS DO NOT USE FOR PRE-FABRICATION OF CONNECTION PIPING
3. MPT DENOTES MALE PIPE THREAD
FPT DENOTES FEMALE PIPE THREAD
BFW DENOTES BEVELED FOR WELDING
4. + UNIT WEIGHT DOES NOT INCLUDE ACCESSORIES (SEE SEPARATE DRAWINGS FOR ACCESSORIES)
5. 3/4" DIA. MOUNTING HOLES. REFER TO RECOMMENDED STEEL SUPPORT DRAWING
6. THE SPRAY PUMP SHOULD BE SIZED FOR 545 GPM AND 2.5 PSIG AT THE INLET CONNECTION

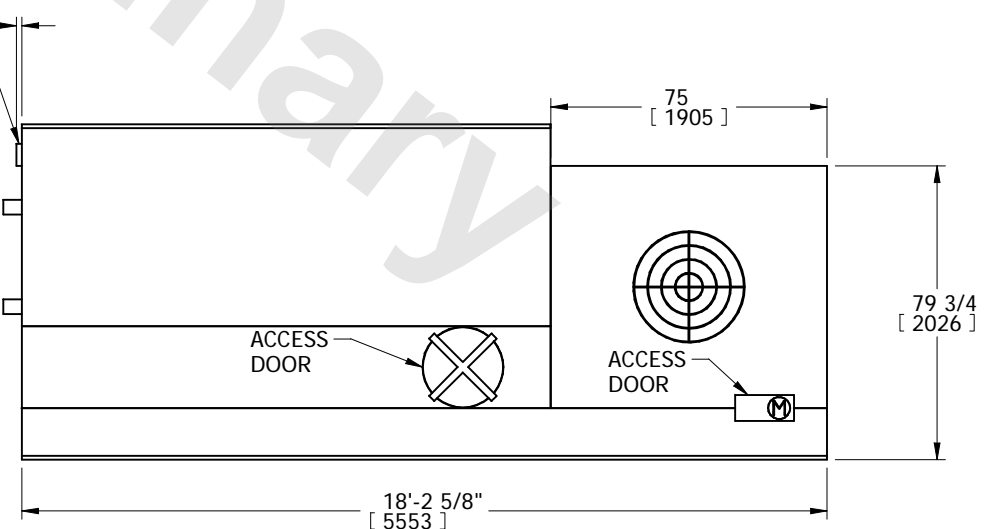
**FACE 2
PLAN VIEW**



FACE 1



FACE 2



FACE 1

SHIPPING WEIGHT	11300 lbs+ [5126] kg+	OPERATING WEIGHT	11630 lbs+ [5275] kg+	HEAVIEST SECTION WEIGHT	11300 lbs+ [5126] kg+	NO. OF SHIPPING SECTIONS	1
-----------------	-----------------------	------------------	-----------------------	-------------------------	-----------------------	--------------------------	---