

EVAPCO, INC.

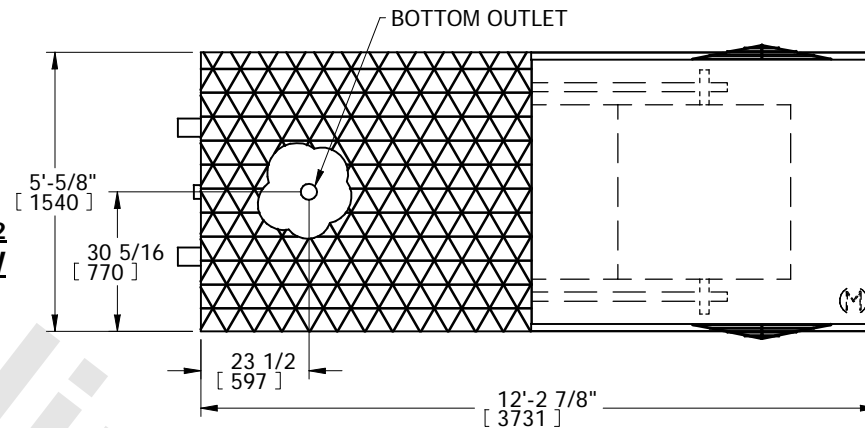


UNIT	MODEL #	SCALE	DWG. #	REV.	DATE	SERIAL #
EVAPORATIVE CONDENSER		NTS	CV050606-DRA-HR	-		

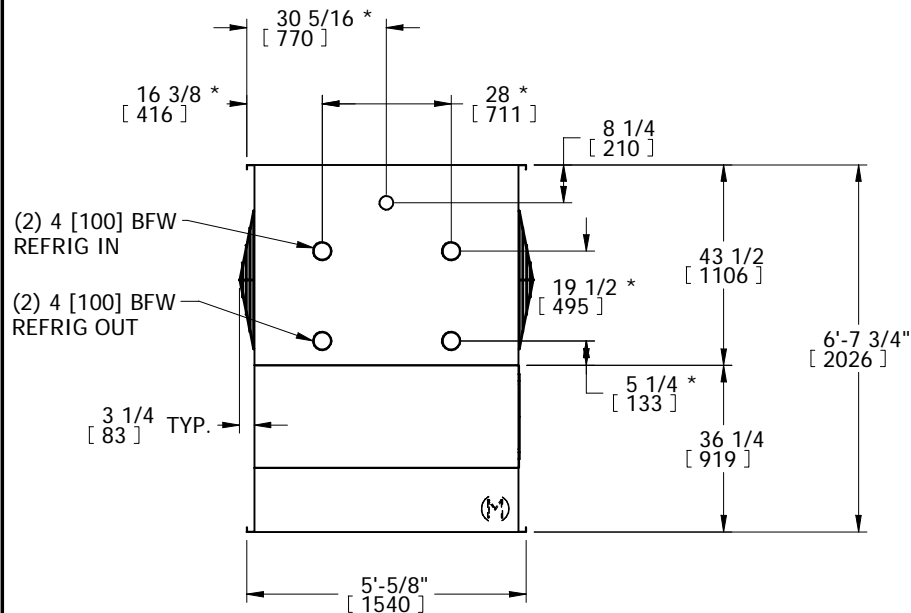
NOTES:

1. (M)- FAN MOTOR LOCATION
2. * -APPROXIMATE DIMENSIONS DO NOT USE FOR PRE-FABRICATION OF CONNECTION PIPING
3. MPT DENOTES MALE PIPE THREAD
FPT DENOTES FEMALE PIPE THREAD
BFW DENOTES BEVELED FOR WELDING
4. + UNIT WEIGHT DOES NOT INCLUDE ACCESSORIES (SEE SEPARATE DRAWINGS FOR ACCESSORIES)
5. 3/4" DIA. MOUNTING HOLES. REFER TO RECOMMENDED STEEL SUPPORT DRAWING
6. THE SPRAY PUMP SHOULD BE SIZED FOR 160 GPM AND 3.5 PSIG AT THE INLET CONNECTION

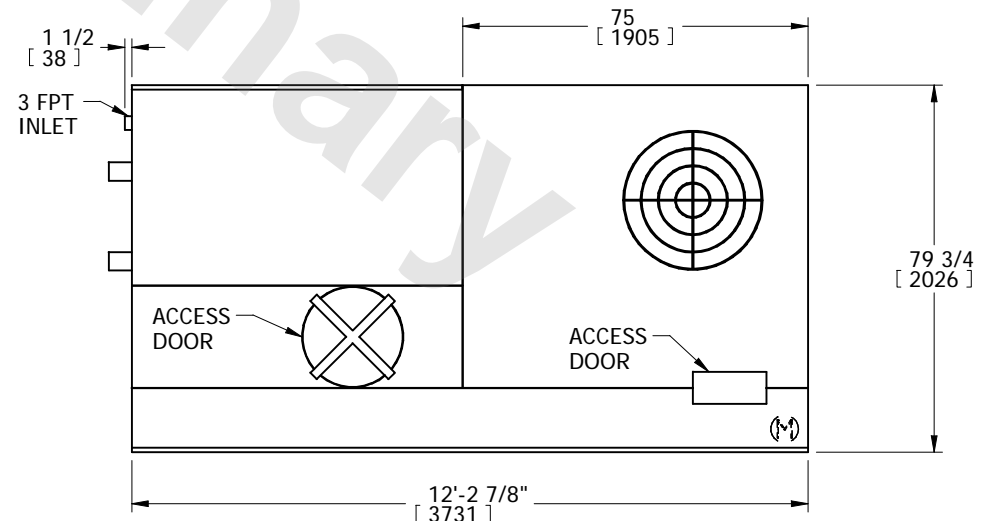
**FACE 2
PLAN VIEW**



FACE 1



FACE 2



FACE 1

SHIPPING WEIGHT	4080 lbs+ [1851] kg+	OPERATING WEIGHT	4470 lbs+ [2028] kg+	HEAVIEST SECTION WEIGHT	4080 lbs+ [1851] kg+	NO. OF SHIPPING SECTIONS	1
-----------------	----------------------	------------------	----------------------	-------------------------	----------------------	--------------------------	---