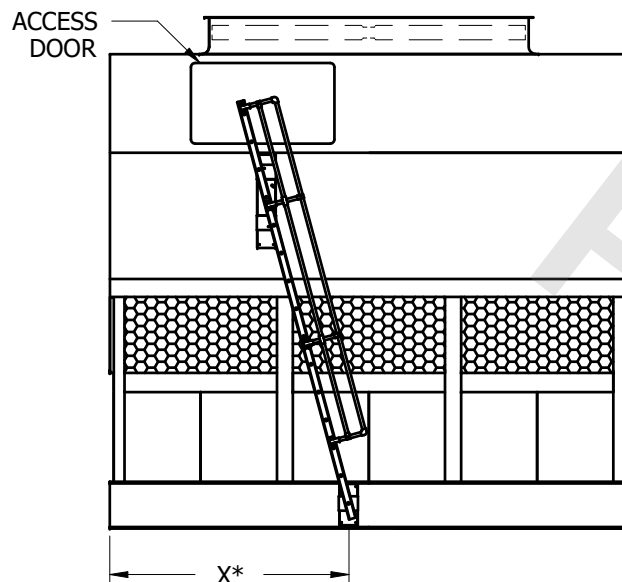


UNIT	eco-LRWB 8-6M12-Z
TITLE	SLOPED LADDER INSTALLATION PACKAGE

EVAPCO, INC.

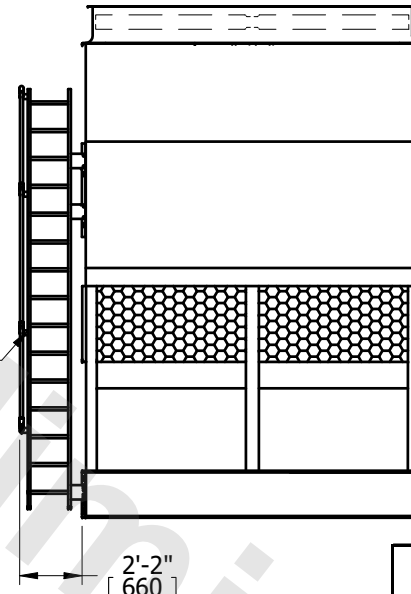


DWG. #	LDWZ1218-DA		
SCALE	N.T.S.	DRAWN BY	SLR



FACE C

LADDER SHIPS
LOOSE FOR FIELD
MOUNTING
(BY OTHERS)



FACE B

NOTE:

1. REFER TO RIGGING PACK FOR LADDER AND PLATFORM MOUNTING INSTRUCTIONS.

2. DIMENSIONS LISTED AS FOLLOWS: ENGLISH FT-IN
[METRIC] [mm]

* THE BOTTOM OF THE LADDER IS AT THE BASE OF THE UNIT. IF THE UNIT IS ELEVATED THEN A LADDER EXTENSION SHOULD BE CONSIDERED. (CONSULT FACTORY).
LADDER EXTENSIONS OF UP TO 3 FEET CAN BE ADDED WITHOUT ANY ADDITIONAL SUPPORT. FOR A LADDER EXTENSION LONGER THAN 3 FEET ADDITIONAL SUPPORT MUST BE PROVIDED BY OTHERS.

RIG LADDER BEFORE PIPING UNIT

MODEL #	X DIM	
	FT-IN	[mm]
ESWA 216-23J, 23K, 23L, 23M	7'-8 5/8 "	2353
ESWA 216-24J, 24K, 24L, 24M	7'-9 3/8 "	2372
ESWA 216-25J, 25K, 25L, 25M	8'- 1/2 "	2451
ESWA 216-26J, 26K, 26L, 26M	8'-2 7/8 "	2511
ESWA 216-33K, 33L, 33M	7'-11 3/8 "	2423
ESWA 216-34K, 34L, 34M, 34N	8'- 1/2 "	2451
ESWA 216-35K, 35L, 35M, 35N	8'-3 5/8 "	2530
ESWA 216-36K, 36L, 36M, 36N	8'-2 1/4 "	2496
ESWA 216-43K, 43L, 43M, 43N	7'-10 1/2 "	2400
ESWA 216-44K, 44L, 44M, 44N, 44O	7'-11 1/4 "	2419
ESWA 216-45K, 45L, 45M, 45N, 45O	8'-2 3/8 "	2499
ESWA 216-46K, 46L, 46M, 46N, 46O	8'-5"	2565

CUSTOMER INSTALLATION NOTES:

- REMOVE LADDER BRACKET MOUNTING BOLTS (1) FROM LADDER MOUNTING CHANNELS (2) ON PAN CASING SECTIONS.
- LOOSEN, BUT DO NOT REMOVE, LADDER BRACKET ASSY. BOLTS (3).
- TO ASSEMBLE, SLIDE LADDER BRACKET ASSY. (4) OVER LADDER MOUNTING CHANNELS (2) LOCATED ON PAN AND CASING (DO NOT REMOVE LADDER BRACKET ASSY. (4) FROM LADDER.)
- ALIGN HOLES AND REINSTALL LADDER BRACKET MOUNTING BOLTS (1) THROUGH LADDER BRACKET ASSY. (4) AND LADDER MOUNTING CHANNELS (2).
- TIGHTEN ALL BOLTS.
- TIGHTEN ADJUSTING SCREW (5) IN THE ADJUSTABLE MOUNTING BRACKETS WHEN APPLICABLE.

